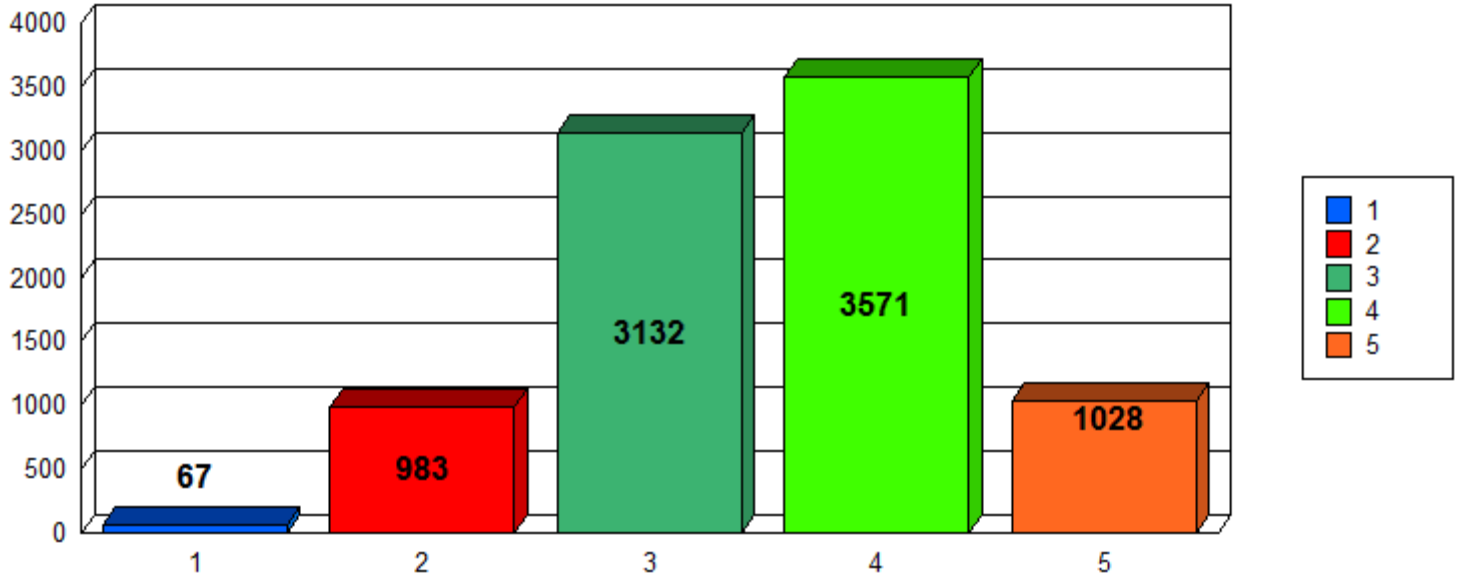


**SPI ANALYSIS - II SEM**



<b>ID</b>	<b>Particular</b>	<b>Total Students</b>
<b>1</b>	<b>SPI &gt;=9</b>	<b>67</b>
<b>2</b>	<b>SPI &gt;=8 AND SPI &lt;9</b>	<b>983</b>
<b>3</b>	<b>SPI &gt;=7 AND SPI &lt;8</b>	<b>3,132</b>
<b>4</b>	<b>SPI &gt;=6 AND SPI &lt;7</b>	<b>3,571</b>
<b>5</b>	<b>SPI &gt;=5 AND SPI &lt;6</b>	<b>1,028</b>